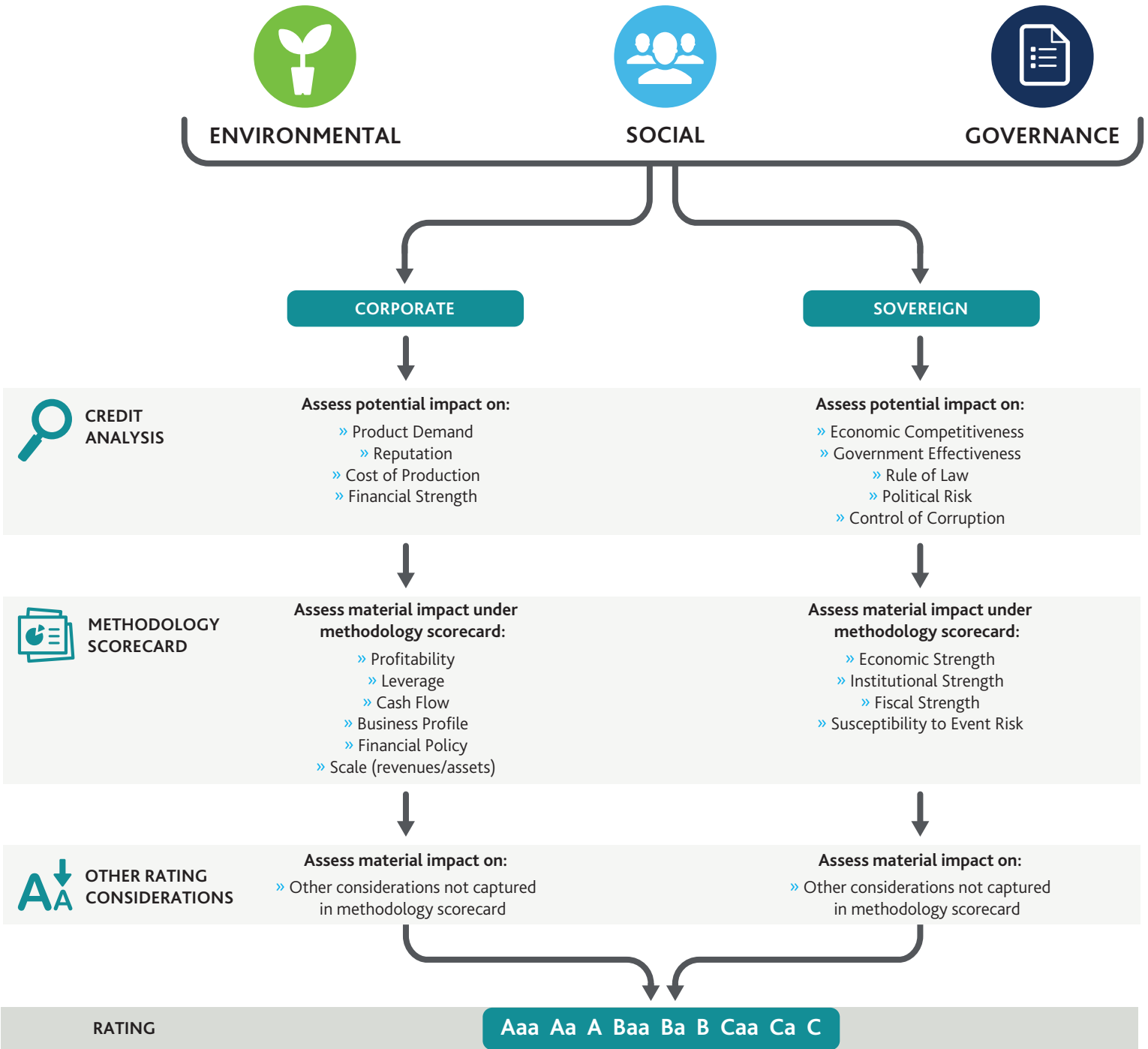


Moody's Approach to Assessing ESG in Credit Analysis

Environmental, Social and Governance considerations are an important component of our corporate credit and sovereign analysis



Source: Moody's Investors Service

This publication does not announce a credit rating action. For any credit ratings referenced in this publication, please see the ratings tab on the issuer/entity page on www.moody.com for the most updated credit rating action information and rating history.