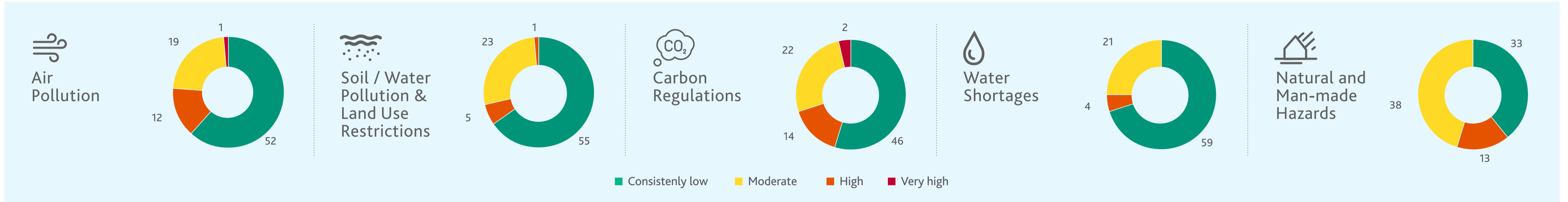


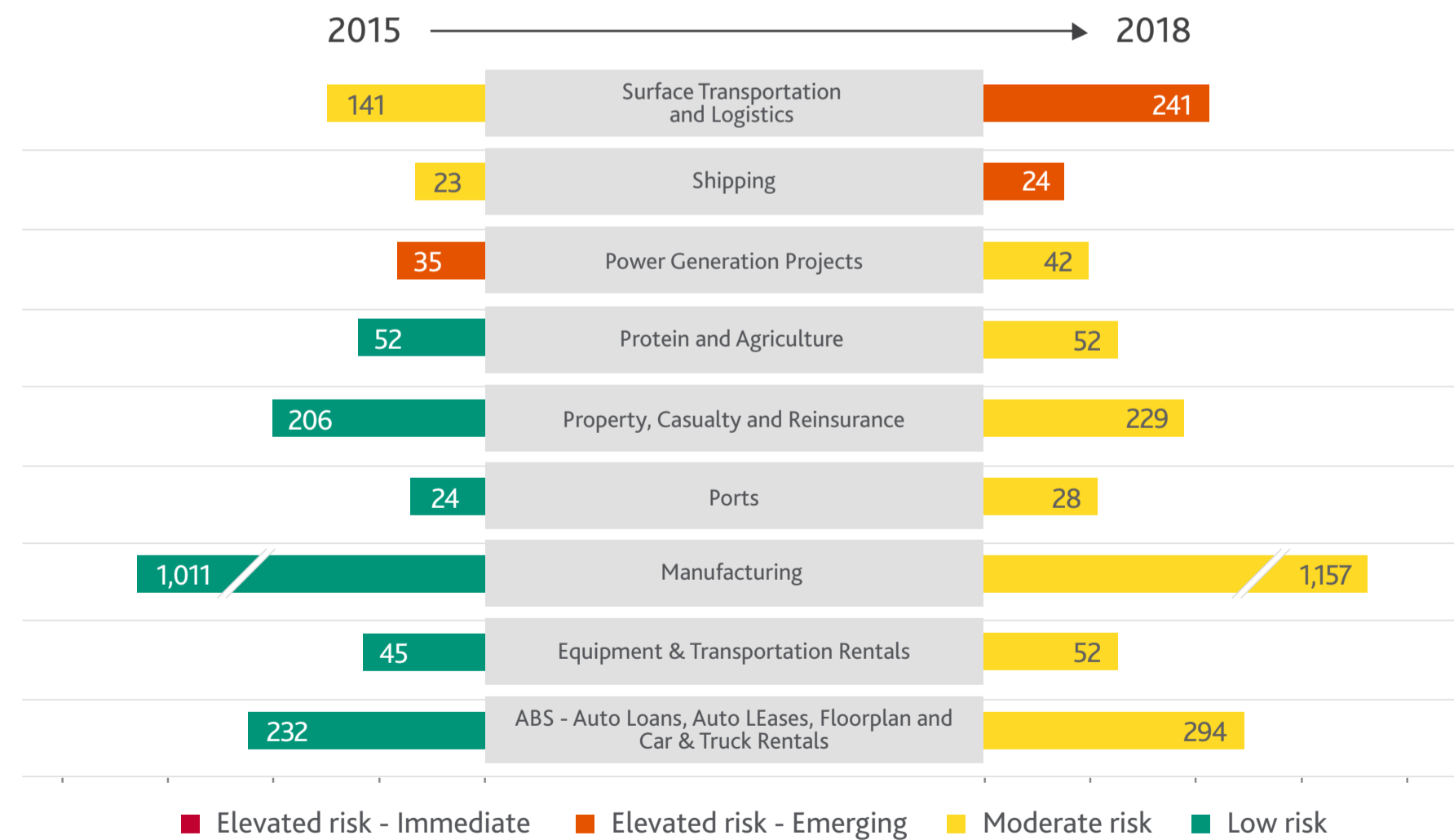
Environmental Risks Global Heatmap Overview

We have assessed the credit exposure of 84 sectors, representing \$74.6 trillion in rated debt, to environmental risks. In this infographic, we highlight the most and least exposed sectors.

Distribution of exposure by environmental risk factor (Number of sectors)



Changes in overall environmental risk scores since 2015 (i.e. rated debt \$B)



Sectors with elevated environmental risks and main driving factors (i.e. 2018 rated debt \$B)

